

"BLUESAGE TRAIL III"

SQUARE FEET PER UNIT

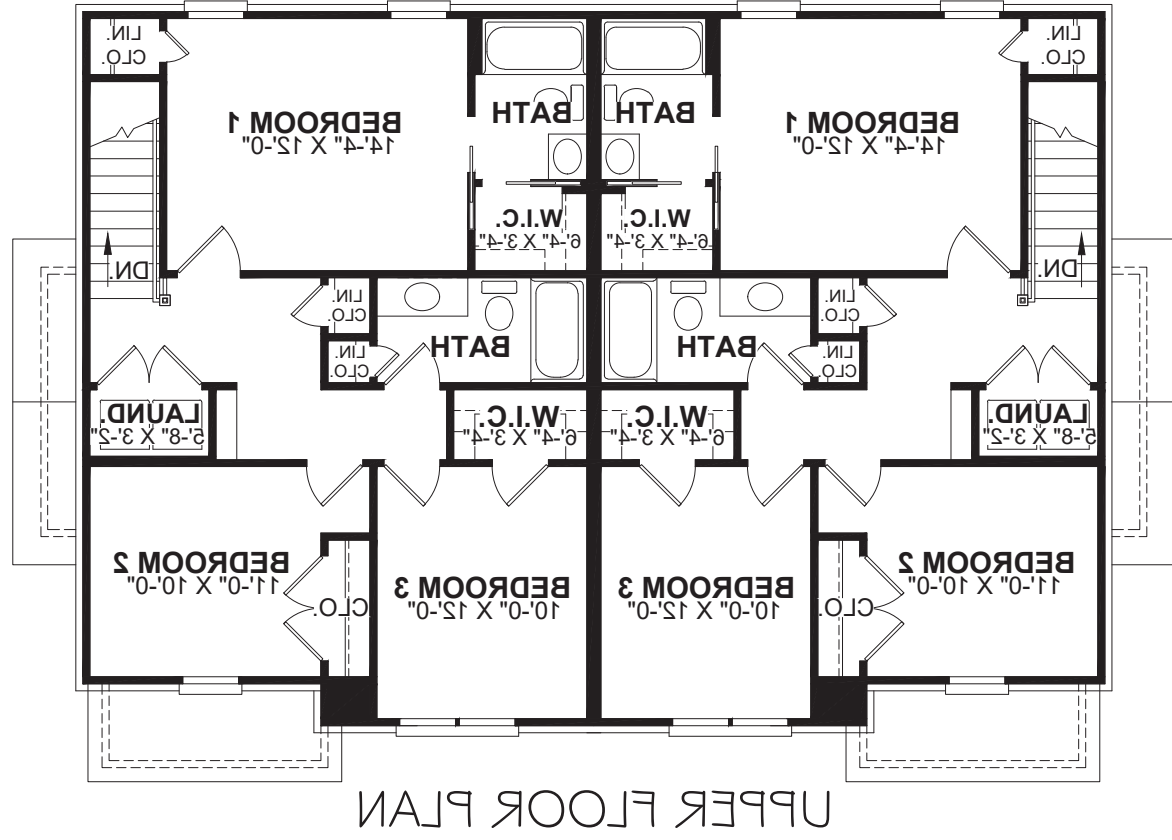
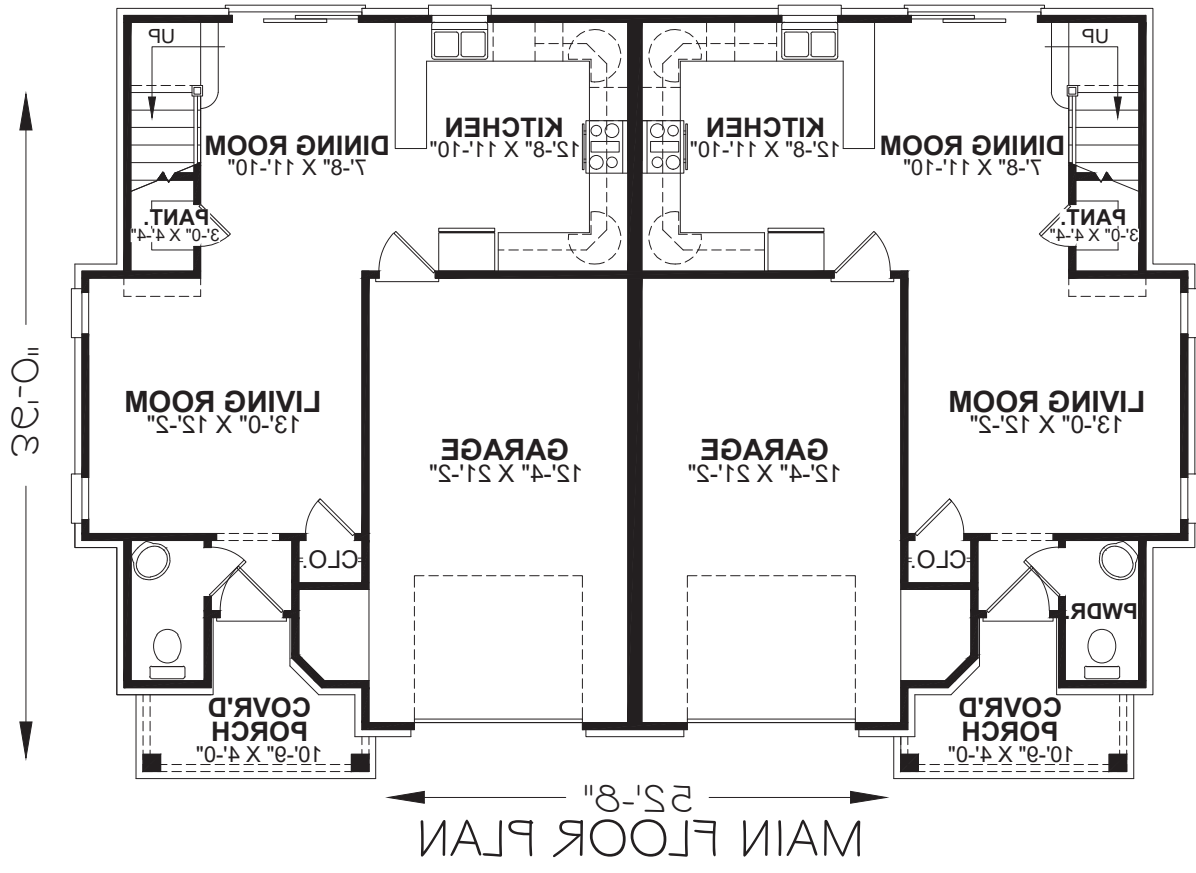
TOTAL HEATED AREA:	1327
MAIN FLOOR: _____	527
UPPER FLOOR: _____	800
GARAGE: _____	290



(865) 694-4477
(865) 240-7214

117 HUXLEY DR. SUITE A
KNOXVILLE, TN 37922

WWW.SDHOMEDESIGNS.COM



"MESSAGE TRAIL III"

Stephen Davis
Home Designs

Building Homes and Dreams since 1987

117 HUXLEY DR. SUITE A
KNOXVILLE, TN 37922

(865) 240-7214
(865) 694-4477

WWW.SDHOMEDSIGNS.COM

TOTAL HEATED AREA:		SQUARE FEET PER UNIT
UPPER FLOOR:	800	1327
MAIN FLOOR:	527	
GARAGE:	290	